

LITHOCHROME® Color Hardener, LITHOCHROME® Antiquing Release & SCOFIELD® Texturetop®

PRODUCT DESCRIPTIONS:

LITHOCHROME Color Hardener is a dry-shake colored hardener formulated to be easily incorporated into the surface of freshly placed concrete.

LITHOCHROME Antiquing Release is a powdered, colored bond breaker used when imprinting with mat-type texturing or stamping tools.

SCOFIELD Texturetop is a trowelable cementitious topping for resurfacing and texturing nonmoving, interior or exterior concrete floors or hardscapes.

LITHOCHROME® Colorwax™ & COLORCURE® Concrete Sealer are available in matching colors.

Additional colors available:
A-11 Concrete Gray, 6016 White, 0510 Black.

Some colors are made to order. Check price list for availability, pricing and possible minimum quantities.

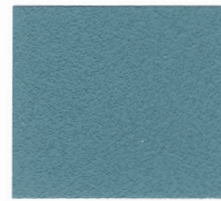
Review Tech-Data Bulletins and MSDS before use. Visit www.scofield.com for the most current versions.



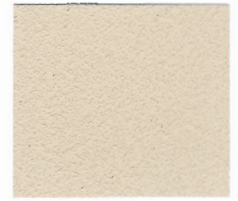
A-53 Arizona Tan



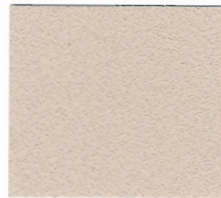
0266 Ash White*



1138-S Blue Smoke+\$\$



A-59 Beige Cream*



0568 Blush Beige*



A-26 Brick Red



1139 Burberry Beige*



A-33 Classic Gray



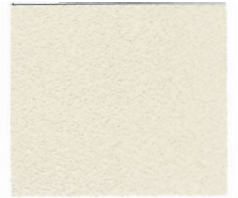
A-27 Dark Red



A-21 Deep Charcoal



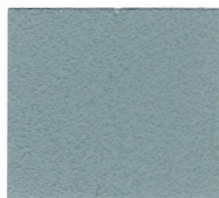
A-25 La Crescenta Brown



3611 Oyster White*



A-55 Pecan Tan



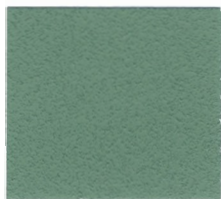
A-57 Platinum Gray



A-24 Russet



A-85 Muted Green



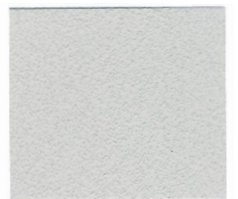
A-50 Slate Gray



4948 Smoke Beige*



A-51 Steadman Buff



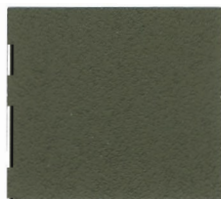
5183 Stone Gray*



A-29 Terra Cotta



A-28 Tile Red



5921 Walnut



5758 Weathered Sage*

COVERAGE RATE FOR COLOR HARDENER: Coverage rates vary with intended use and application. LITHOCHROME Color Hardener should be applied at a rate of 50 lb (1 bag) per 100 ft² (2.5 kg/m²), except where indicated by an asterisk(*).

*Denotes colors requiring a higher coverage rate, where Scofield recommends 90-120 lb per 100 ft² (4.5-6.0 kg/m²). See reverse for more information.

+\$\$ = Check current market price.

Colors are approximate and best viewed in daylight. Colors shown represent the use of LITHOCHROME Color Hardener with a flat-troweled finish which has been cured with color-matched LITHOCHROME Colorwax or COLORCURE Concrete Sealer.